

# Garage-Cabinet-Plans.com



Seth Townsend, Cabinetmaker, LLC  
Marietta, GA 30068  
770 973-9916

All dimensions given are subject to verification on job site and adjustment to fit job conditions.

This is an original design and must not be released or copied unless applicable fee has been paid or job order placed.

Title: <b>7 ft Garage Cabinet Plans</b>		
Size:	Drawing Number:	Revision:
Date:	Sheet	

# Garage-Cabinet-Plans.com



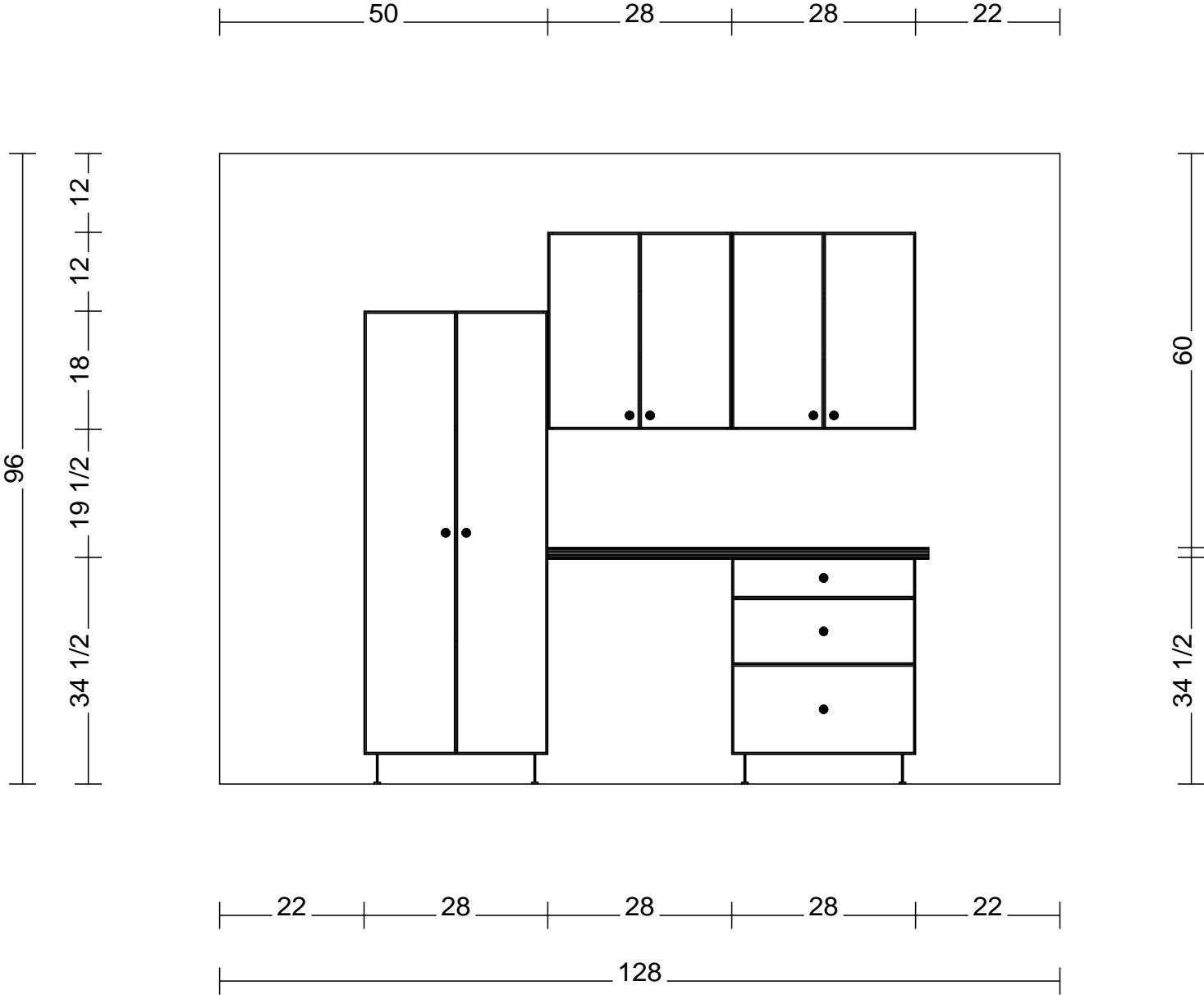
Seth Townsend, Cabinetmaker, LLC  
Marietta, GA 30068  
770 973-9916

All dimensions given are subject to verification on job site and adjustment to fit job conditions.

This is an original design and must not be released or copied unless applicable fee has been paid or job order placed.

Title: <b>7 ft Garage Cabinet Plans</b>		
Size:	Drawing Number:	Revision:
Date:	Sheet	

# Garage-Cabinet-Plans.com



Seth Townsend, Cabinetmaker, LLC  
 Marietta, GA 30068  
 770 973-9916

All dimensions given are subject to verification on job site and adjustment to fit job conditions.

This is an original design and must not be released or copied unless applicable fee has been paid or job order placed.

Title: 7 ft Garage Cabinet Plans		
Size:	Drawing Number:	Revision:
Date:	Sheet	

# Garage-Cabinet-Plans.com



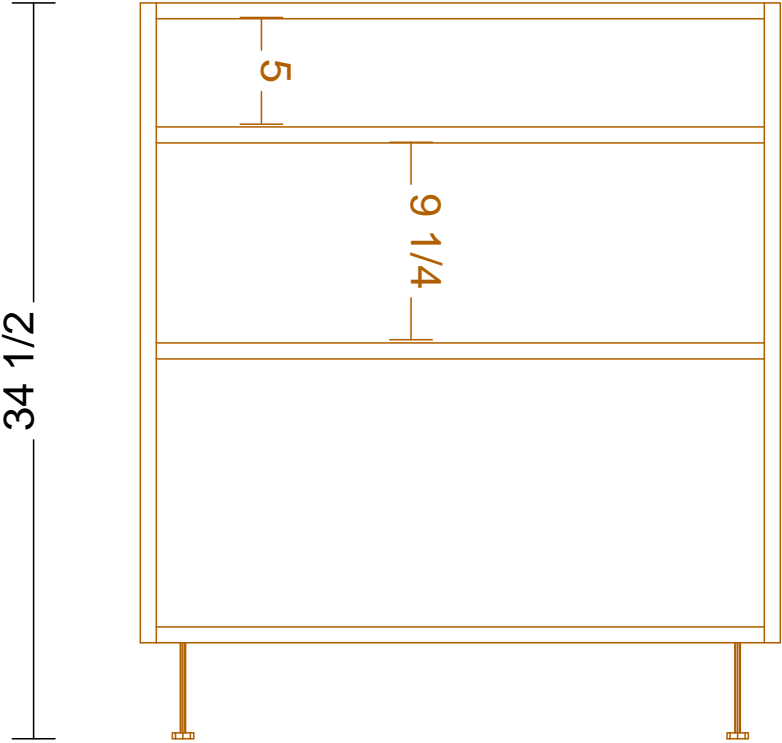
Seth Townsend, Cabinetmaker, LLC  
Marietta, GA 30068  
770 973-9916

All dimensions given are subject to verification on job site and adjustment to fit job conditions.

This is an original design and must not be released or copied unless applicable fee has been paid or job order placed.

Title: 7 ft Garage Cabinet Plans		
Size:	Drawing Number:	Revision:
Date:	Sheet	

# Garage-Cabinet-Plans.com



Seth Townsend, Cabinetmaker, LLC  
Marietta, GA 30068  
770 973-9916

All dimensions given are subject to verification on job site and adjustment to fit job conditions.

This is an original design and must not be released or copied unless applicable fee has been paid or job order placed.

Title: 7 ft Garage Cabinet Plans		
Size:	Drawing Number:	Revision:
Date:	Sheet	