

# Garage-Cabinet-Plans.com - Chop Saw Stand



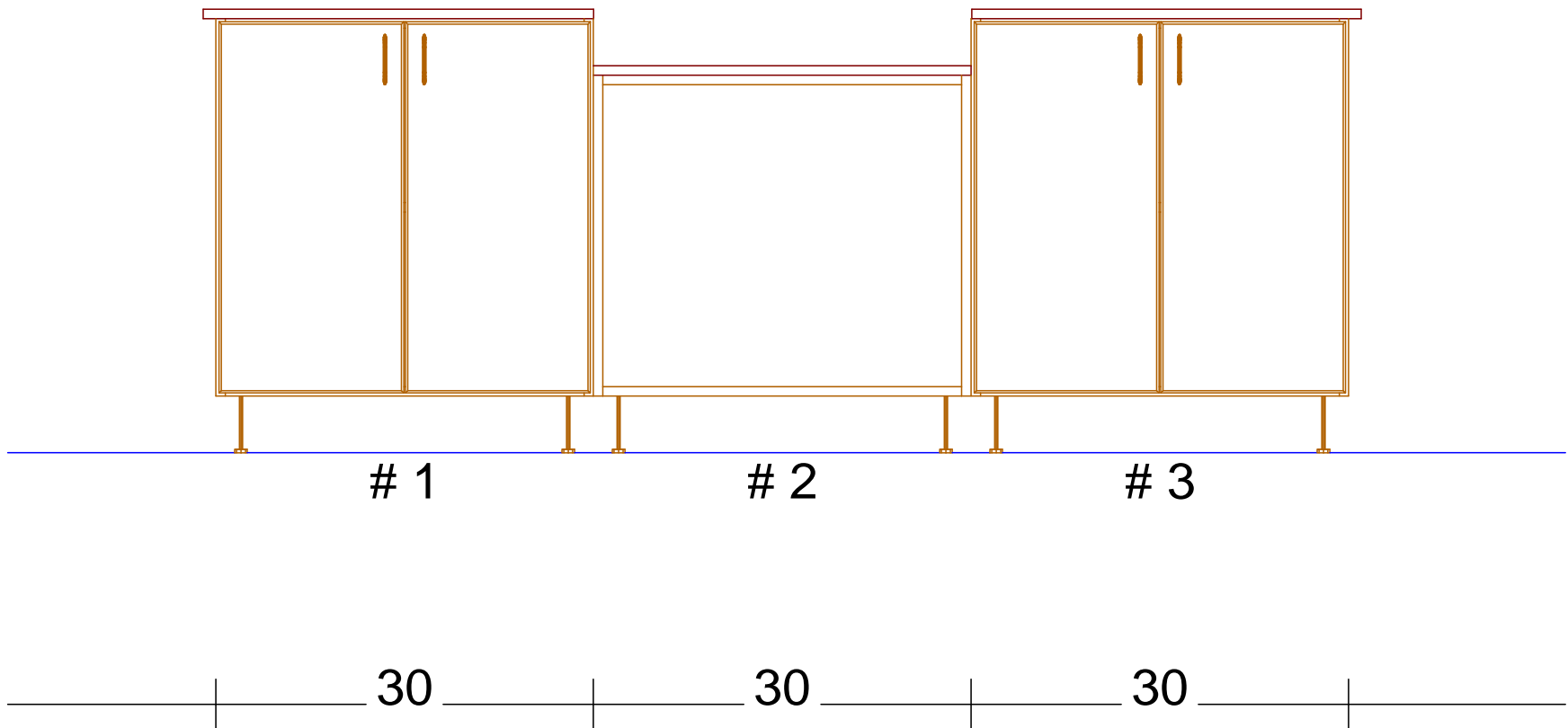
Seth Townsend, Cabinetmaker, LLC  
Marietta, GA

All dimensions given are subject to verification on job site and adjustment to fit job conditions.

This is an original design and must not be released or copied unless applicable fee has been paid or job order placed.

Title: Chop Saw Stand		
Size:	Drawing Number:	Revision:
Date:	Sheet 1 of 2	

# Garage-Cabinet-Plans.com - Chop Saw Stand



Seth Townsend, Cabinetmaker, LLC  
Marietta, GA

All dimensions given are subject to verification on job site and adjustment to fit job conditions.

This is an original design and must not be released or copied unless applicable fee has been paid or job order placed.

Title: Chop Saw Stand

Size:

Drawing Number:

Revision:

Date:

Sheet

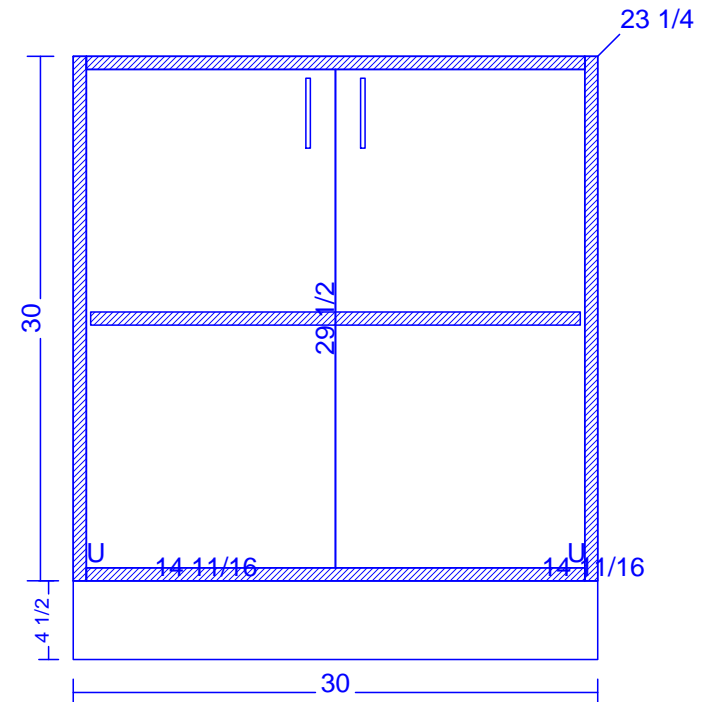
Sheet 2 of 2

CABINET # 1 - B30FH  
30 x 34 1/2 x 23 1/4 ( 1 )

(2) DOORS  
14 11/16 29 1/2 Plywood Door Plywood

PANEL STOCK  
(1) 23 1/4 30 Unfinished Left End Plywood  
(1) 23 1/4 30 Unfinished Right End Plywood  
(1) 28 1/2 30 Unfinished Back Plywood  
(1) 22 1/2 28 1/2 Deck Plywood  
(1) 3 1/32 28 1/2 Top Stretcher Plywood  
(1) 3 28 1/2 Top Stretcher Plywood  
(1) 22 3/8 28 Adjustable Shelf Plywood

HARDWARE  
(4) 1 2 1/2 Hinge Blum 125  
(2) 1/4 4 Door Pull Chrome 4in C-Pull



# Garage-Cabinet-Plans.com

CABINET # 1 - B30FH

L.Reveal = 1/4      R.Reveal = 1/4      T.Reveal = 1/4      B.Reveal = 1/4  
 H.Reveal = 1/8      V.Reveal = 1/8  
 Left End = Unfinished      Right End = Unfinished      Back = Unfinished  
 Toe Height = 4 1/2      Toe Recess = 3

Seth Townsend

Job

Chop Saw Stand

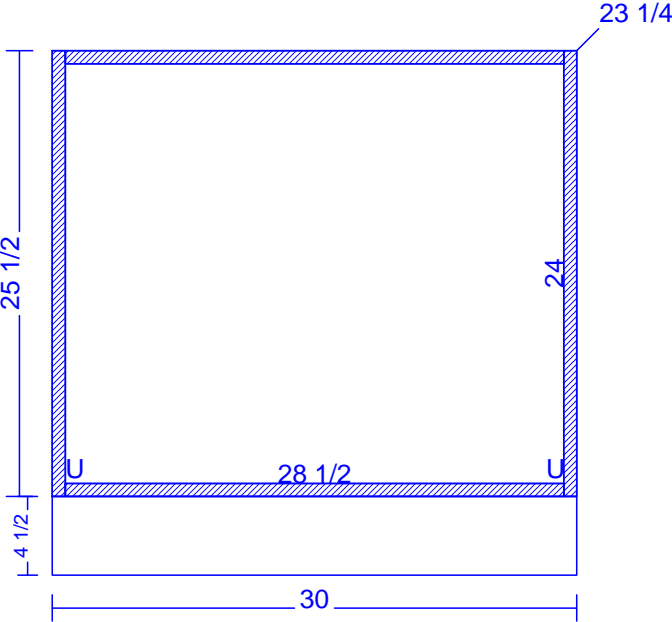
Room # 1 (Room 1) - Wall # 2

Date : 12-27-2015

CABINET # 2 - B30-30H

30 x 30 x 23 1/4 ( 1 )

PANEL STOCK			
(1)	23 1/4	25 1/2	Unfinished Left End Plywood
(1)	23 1/4	25 1/2	Unfinished Right End Plywood
(1)	28 1/2	25 1/2	Unfinished Back Plywood
(1)	22 1/2	28 1/2	Deck Plywood
(1)	3 1/32	28 1/2	Top Stretcher Plywood
(1)	3	28 1/2	Top Stretcher Plywood



# Garage-Cabinet-Plans.com

CABINET # 2 - B30-30H

L.Reveal = 1/4	R.Reveal = 1/4	T.Reveal = 1/4	B.Reveal = 1/4
		H.Reveal = 1/8	V.Reveal = 1/8
Left End = Unfinished	Right End = Unfinished	Back = Unfinished	
Toe Height = 4 1/2	Toe Recess = 3		

Seth Townsend

Job

Chop Saw Stand

Room # 1 (Room 1) - Wall # 2

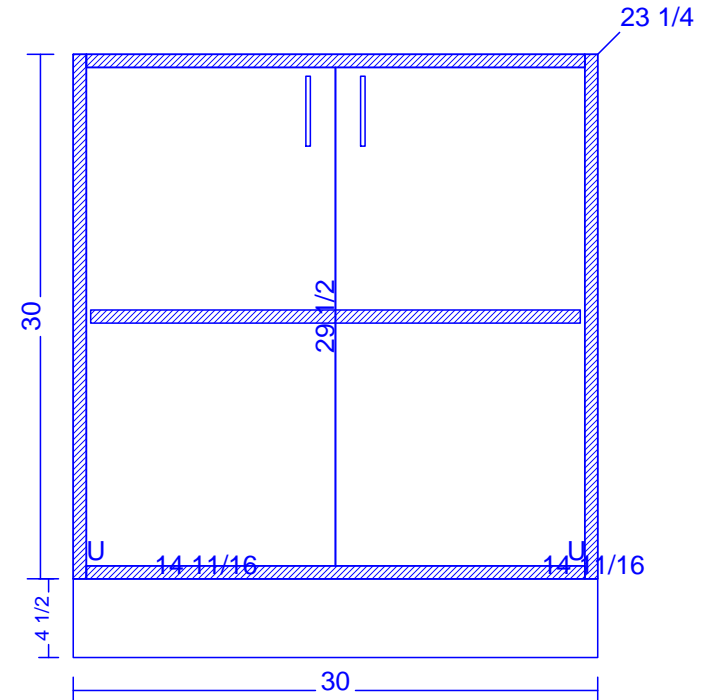
Date : 12-27-2015

(2) DOORS  
 14 11/16 29 1/2 Plywood Door Plywood

CABINET # 3 - B30FH  
 30 x 34 1/2 x 23 1/4 ( 1 )

PANEL STOCK  
 (1) 23 1/4 30 Unfinished Left End Plywood  
 (1) 23 1/4 30 Unfinished Right End Plywood  
 (1) 28 1/2 30 Unfinished Back Plywood  
 (1) 22 1/2 28 1/2 Deck Plywood  
 (1) 3 1/32 28 1/2 Top Stretcher Plywood  
 (1) 3 28 1/2 Top Stretcher Plywood  
 (1) 22 3/8 28 Adjustable Shelf Plywood

HARDWARE  
 (4) 1 2 1/2 Hinge Blum 125  
 (2) 1/4 4 Door Pull Chrome 4in C-Pull



# Garage-Cabinet-Plans.com

CABINET # 3 - B30FH

L.Reveal = 1/4 R.Reveal = 1/4 T.Reveal = 1/4 B.Reveal = 1/4  
 H.Reveal = 1/8 V.Reveal = 1/8  
 Left End = Unfinished Right End = Unfinished Back = Unfinished  
 Toe Height = 4 1/2 Toe Recess = 3

Seth Townsend

Job

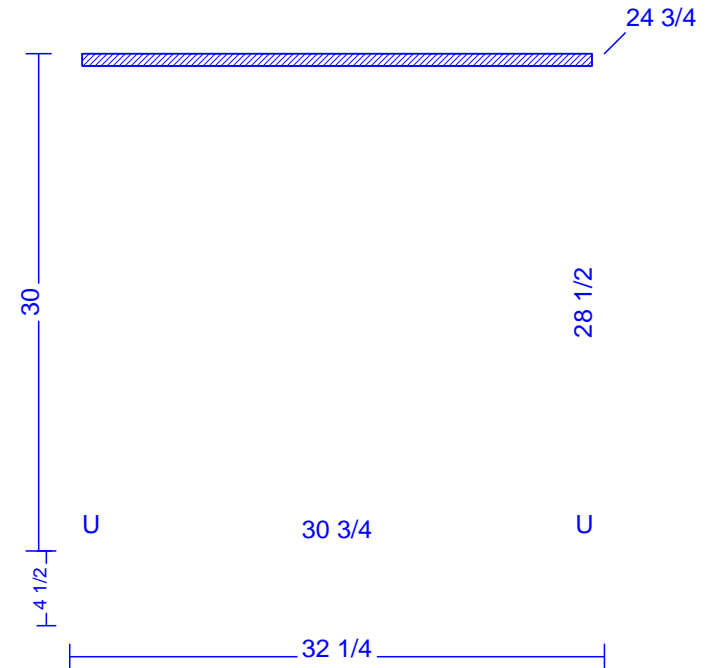
Chop Saw Stand

Room # 1 (Room 1) - Wall # 2

Date : 12-27-2015

(1) PANEL STOCK  
24 30 3/4 Top Plywood

CABINET # 4 - Top for Cab # 1  
32 1/4 x 34 1/2 x 24 3/4 ( 1 )



# Garage-Cabinet-Plans.com

CABINET # 4 - Top for Cab # 1

L.Reveal = 1/4      R.Reveal = 1/4      T.Reveal = 1/4      B.Reveal = 1/4  
H.Reveal = 1/8      V.Reveal = 1/8  
Left End = Unfinished    Right End = Unfinished    Back = Unfinished  
Toe Height = 4 1/2      Toe Recess = 3

Seth Townsend

Job

Chop Saw Stand

Room # 1 (Room 1) - Wall # 2

Date : 12-27-2015

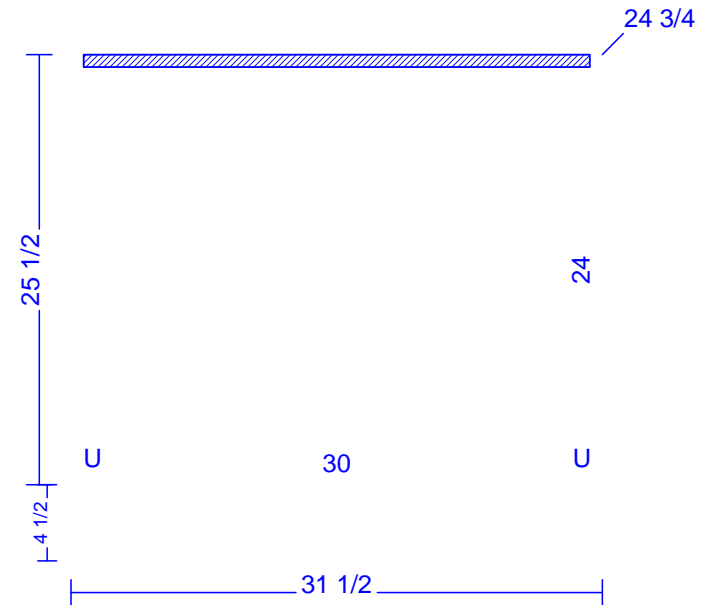
(1) PANEL STOCK  
24 30

Top

Plywood

CABINET # 5 - Top for Cab # 2

31 1/2 x 30 x 24 3/4 ( 1 )



# Garage-Cabinet-Plans.com

CABINET # 5 - Top for Cab # 2

L.Reveal = 1/4

R.Reveal = 1/4

T.Reveal = 1/4

B.Reveal = 1/4

H.Reveal = 1/8

V.Reveal = 1/8

Left End = Unfinished

Right End = Unfinished

Back = Unfinished

Toe Height = 4 1/2

Toe Recess = 3

Seth Townsend

Job

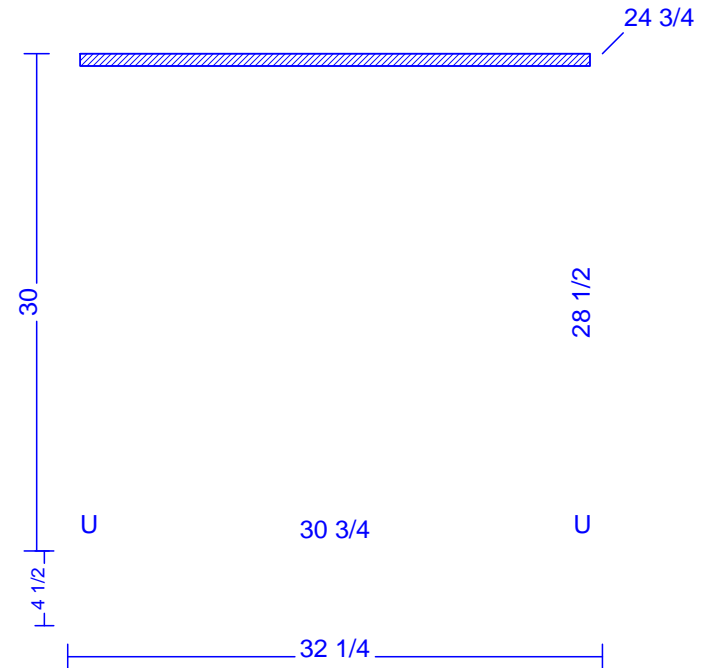
Chop Saw Stand

Room # 1 (Room 1) - Wall # 2

Date : 12-27-2015

(1) PANEL STOCK  
 24 30 3/4 Top Plywood

CABINET # 6 - Top for Cab # 3  
 32 1/4 x 34 1/2 x 24 3/4 ( 1 )



# Garage-Cabinet-Plans.com

CABINET # 6 - Top for Cab # 3

L.Reveal = 1/4      R.Reveal = 1/4      T.Reveal = 1/4      B.Reveal = 1/4  
 H.Reveal = 1/8      V.Reveal = 1/8  
 Left End = Unfinished    Right End = Unfinished    Back = Unfinished  
 Toe Height = 4 1/2      Toe Recess = 3

Seth Townsend

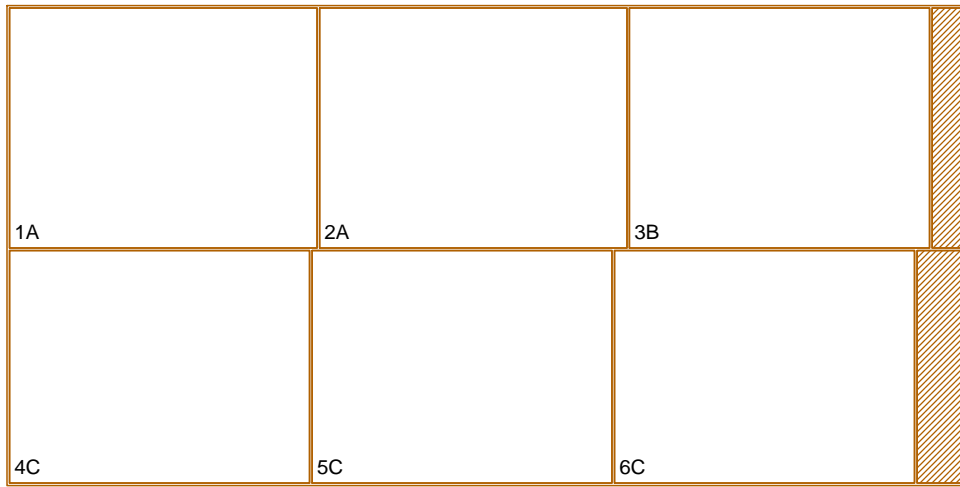
Job

Chop Saw Stand

Room # 1 (Room 1) - Wall # 2

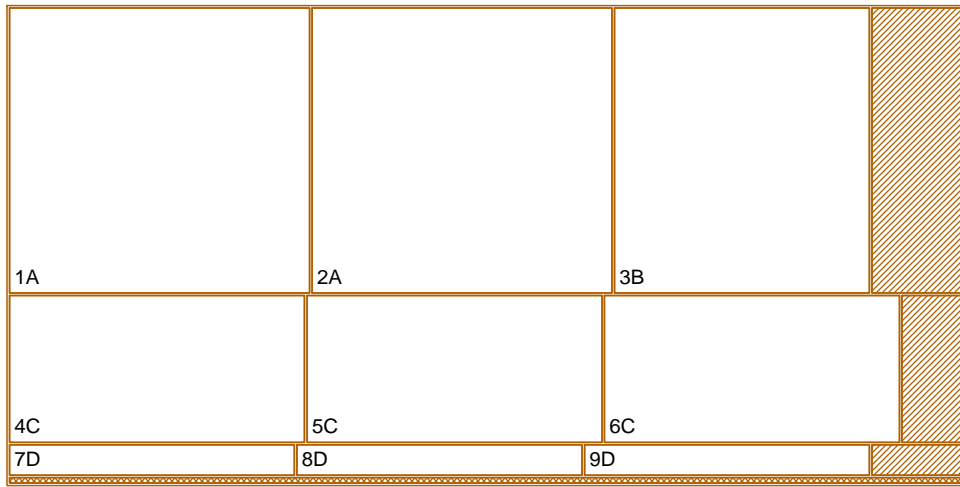
Date : 12-27-2015





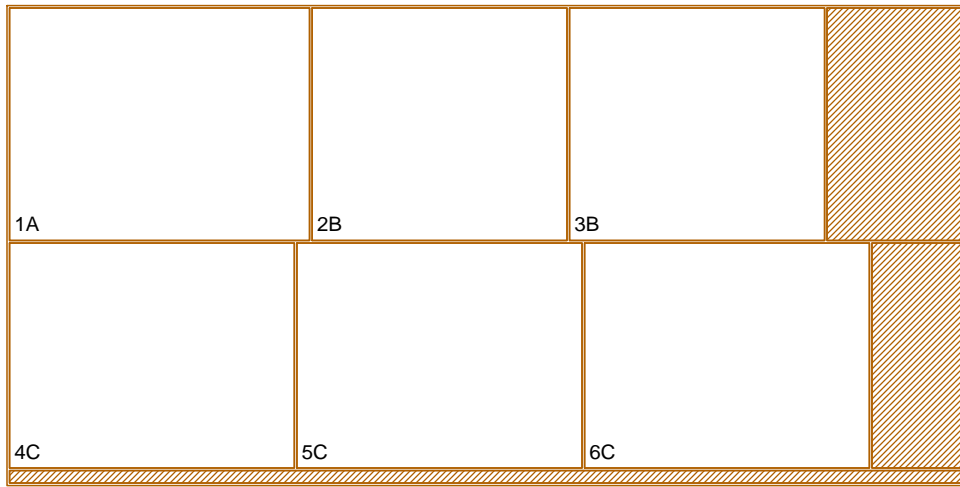
#	Phase1	Phase2	Phase3>	Name	Width	Length	Cb#	Rm#	CNC
	R 24								
1		30 3/4		Top	24	30 3/4	4	1	
2		30 3/4		Top	24	30 3/4	6	1	
3		30		Top	24	30	5	1	
	R 23 1/4								
4		30		Unfinished Left End	23 1/4	30	1	1	
5		30		Unfinished Right End	23 1/4	30	1	1	
6		30		Unfinished Left End	23 1/4	30	3	1	

# Garage-Cabinet-Plans.com



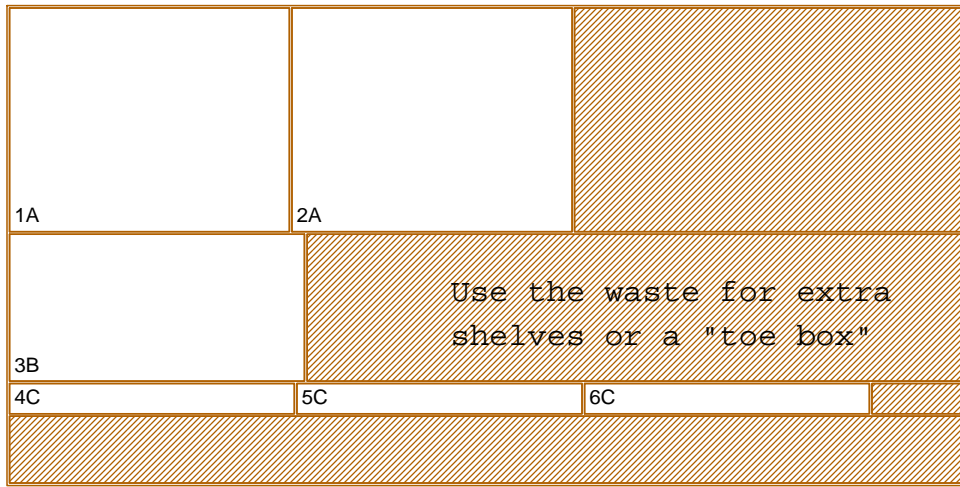
#	Phase1	Phase2	Phase3>	Name	Width	Length	Cb#	Rm#	CNC
	R 28 1/2								
1		30		Unfinished Back	28 1/2	30	1	1	
2		30		Unfinished Back	28 1/2	30	3	1	
3		25 1/2		Unfinished Back	28 1/2	25 1/2	2	1	
	R 14 11/16								
4		29 1/2		Door Slab	14 11/16	29 1/2	1	1	
5		29 1/2		Door Slab	14 11/16	29 1/2	1	1	
6		29 1/2		Door Slab	14 11/16	29 1/2	3	1	
	R 3 1/32								
7		28 1/2		Top Stretcher	3 1/32	28 1/2	1	1	
8		28 1/2		Top Stretcher	3 1/32	28 1/2	2	1	
9		28 1/2		Top Stretcher	3 1/32	28 1/2	3	1	

# Garage-Cabinet-Plans.com



#	Phase1	Phase2	Phase3>	Name	Width	Length	Cb#	Rm#	CNC
	R 23 1/4								
1		30		Unfinished Right End	23 1/4	30	3	1	
2		25 1/2		Unfinished Left End	23 1/4	25 1/2	2	1	
3		25 1/2		Unfinished Right End	23 1/4	25 1/2	2	1	
	R 22 1/2								
4		28 1/2		Deck	22 1/2	28 1/2	1	1	
5		28 1/2		Deck	22 1/2	28 1/2	2	1	
6		28 1/2		Deck	22 1/2	28 1/2	3	1	

# Garage-Cabinet-Plans.com



#	Phase1	Phase2	Phase3>	Name	Width	Length	Cb#	Rm#	CNC
	R 22 3/8								
1		28		Adjustable Shelf	22 3/8	28	1	1	
2		28		Adjustable Shelf	22 3/8	28	3	1	
	R 14 11/16								
3		29 1/2		Door Slab	14 11/16	29 1/2	3	1	
	R 3								
4		28 1/2		Top Stretcher	3	28 1/2	1	1	
5		28 1/2		Top Stretcher	3	28 1/2	2	1	
6		28 1/2		Top Stretcher	3	28 1/2	3	1	

# Garage-Cabinet-Plans.com

# Material Cut List

December 27, 2015

## Band Solid

Quan	Part	Width	Length	Cabinet (Quan)
2	Interior Banding	3/4	29	1, 3

Totals:           Width           Length  
                  3/4               58.0

Note: Edge banding is not required, but can be used as needed.

# Material Cut List

December 27, 2015

## Band Custom

Quan	Part	Width	Length	Cabinet (Quan)
2	Exterior Banding	3/4	32 1/4	4, 6
5	Exterior Banding	3/4	31 1/2	1 (2), 3 (2), 5
6	Exterior Banding	3/4	30	1 (2), 2 (2), 3 (2)
2	Exterior Banding	3/4	27	2 (2)

Totals:           Width                   Length  
                   3/4                       456.0

### Blum 125

Quan	Part	Width	Length	Cabinet (Quan)
8	Hinge	1	2 1/2	1 (4), 3 (4)

Totals:            Width            Length  
                     1                        20.0

### Black

Quan	Part	Width	Length	Cabinet (Quan)
12	Leg Leveler	1	4 1/2	1 (4), 2 (4), 3 (4)

Totals:            Width                    Length            Rips  
                         1                            54.0            0.6



# Material Cut List

December 27, 2015

## Chrome 4in C-Pull

Quan	Part	Width	Length	Cabinet (Quan)
4	Door Pull	1/4	4	1 (2), 3 (2)

Totals:           Width                   Length       Rips  
                  1/4                   16.0       0.2

# Material Cut List

December 27, 2015

## Plywood

Quan	Part	Width	Length	Cabinet (Quan)
2	Unfinished Back	28 1/2	30	1, 3
1	Unfinished Back	28 1/2	25 1/2	2
2	Top	24	30 3/4	4, 6
1	Top	24	30	5
2	Unfinished Left End	23 1/4	30	1, 3
2	Unfinished Right End	23 1/4	30	1, 3
1	Unfinished Left End	23 1/4	25 1/2	2
1	Unfinished Right End	23 1/4	25 1/2	2
3	Deck	22 1/2	28 1/2	1, 2, 3
2	Adjustable Shelf	22 3/8	28	1, 3
4	Door Slab	14 11/16	29 1/2	1 (2), 3 (2)
3	Top Stretcher	3 1/32	28 1/2	1, 2, 3
3	Top Stretcher	3	28 1/2	1, 2, 3

Totals:	Width	Length	Rips
	28 1/2	85.5	0.9
	24	91.5	1.0
	23 1/4	171.0	1.8
	22 1/2	85.5	0.9
	22 3/8	56.0	0.6
	14 11/16	118.0	1.2
	3 1/32	85.5	0.9